

## Polysto kerbs RB-model

**RB-models** are prefabricated full core kerbs with sloped top and rebate where the floor can be mounted into the Polysto kerbs (seamless connection). Available in a SaniCoat or a Natural version. The kerbs consist of a water repellent durable CleanRock mass. The SaniCoat version is finished food-safe with a smooth Sanicoat (Polyester gelcoat). Including matching accessories; prefabricated internal and external corners and end-pieces.

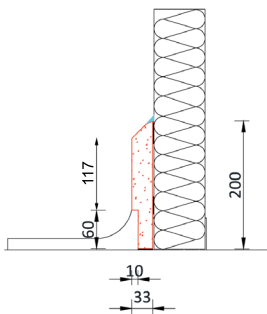
Waterproof bonding using Polysto Hard Fix Glue (Hybrid Polymere). Finishing of the joints using Polysto Food Safe Sealant or a chemical welding HygiSeal. For SaniCoat kerbs the color white is used, for Natural kerbs RAL9002 is used.

### OP20RB(na)



#### IMPACT CLASS 2

against manual trolleys up to max. 200 Kg total weight



#### Technical info

	Kerb	Corner internal / external	End piece right / left
Length	1.000 mm	2 x 500 mm	500 mm
Height	200 mm	200 mm	200 mm
Thickness	33 mm	33 mm	33 mm
Weight	14 kg	14 kg	7 kg
Amount / pallet	50 m	50 pc	50 R & 50 L
Pallet size	120 x 80 x 70cmH	120 x 80 x 70cmH	120 x 80 x 70cmH
Pallet weight	+ - 720 kg	+ - 720 kg	+ - 720 kg
Temperature resistance	-35°C - +85°C (long exposure)		

#### Average consumption of (per meter)

Food Safe sealant or HygiSeal White or RAL9002	135 cc
Hard Fix Glue	300 cc

#### Installation m/day (8h) with 1 installer

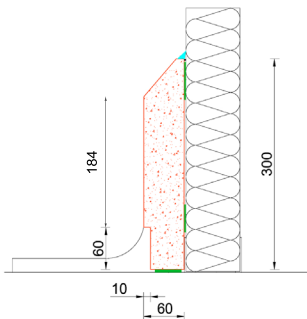
Food Safe Sealant	50 meter
HygiSeal	30 meter

### OP30RB10(na)



#### IMPACT CLASS 3

against manual pallet truck up to max. 900 k total weight



#### Technical info

	Kerb	Corner internal / external	End piece right / left
Length	1.500 mm	2 x 500 mm	500 mm
Height	300 mm	300 mm	300 mm
Thickness	60 mm	60 mm	60 mm
Weight	55,5 kg	37 kg	18,50 kg
Amount / pallet	30 m	20 pc	20 R & 20 L
Pallet size	155 x 65 x 70cmH	120 x 80 x 70cmH	120 x 80 x 70cmH
Pallet weight	+ - 1.110 kg	+ - 760 kg	+ - 760 kg
Temperature resistance	-35°C - +85°C (long exposure)		

#### Average consumption of (per meter)

Food Safe sealant or HygiSeal White or RAL9002	135 cc
Hard Fix Glue	450 cc

#### Installation m/day (8h) with 2 installers

Food Safe Sealant	60 meter
HygiSeal	45 meter

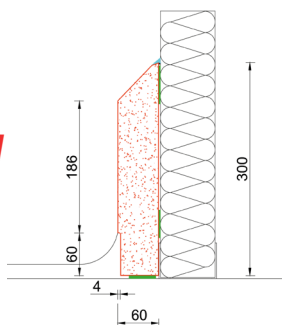
used when floors with a higher thermal resistance are required (thicker floors) and for the use of tile floors

### OP30RB4(na)



#### IMPACT CLASS 3

against manual pallet truck up to max. 900 k total weight



#### Technical info

	Kerb	Corner internal / external	End piece right / left
Length	1.500 mm	2 x 500 mm	500 mm
Height	300 mm	300 mm	300 mm
Thickness	60 mm	60 mm	60 mm
Weight	55,5 kg	37 kg	18,50 kg
Amount / pallet	30 m	20 pc	20 R & 20 L
Pallet size	155 x 65 x 70cmH	120 x 80 x 70cmH	120 x 80 x 70cmH
Pallet weight	+ - 1.110 kg	+ - 760 kg	+ - 760 kg
Temperature resistance	-35°C - +85°C (long exposure)		

#### Average consumption of (per meter)

Food Safe sealant or HygiSeal White or RAL9002	135 cc
Hard Fix Glue	450 cc

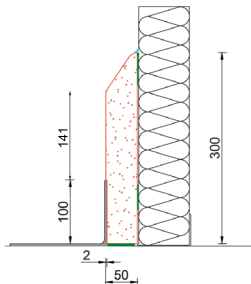
#### Installation m/day (8h) with 2 installers

Food Safe Sealant	60 meter
HygiSeal	45 meter

**NEW:** sloped top and rebate of 4 mm deep

**NEW**

## OP30RBcr



### IMPACT CLASS 3

against manual pallet truck up to max. 900 k total weight

#### Technical info

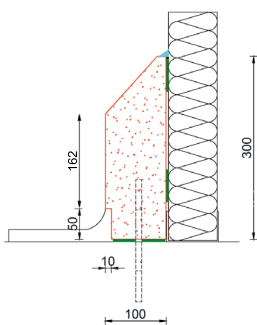
	Kerb	Corner internal / external	End piece right / left
Length	1.500 mm	2 x 1.500 mm	1.500 mm
Height	300 mm	300 mm	300 mm
Thickness	50 mm	50 mm	50 mm
Weight	52 kg	104 kg	52 kg
Amount / pallet	30 m	10 pc	10 R & 10 L
Pallet size	155 x 65 x 70cmH	155 x 65 x 70cmH	155 x 65 x 70cmH
Pallet weight	+/- 1.060 kg	+/- 1.060 kg	+/- 1.060 kg
Temperature resistance	-35°C - +85°C (long exposure)		

#### Average consumption of (per meter)

Food Safe sealant or HygiSeal White or RAL9002	95 cc
Hard Fix Glue	450 cc

Installation m/day (8h) with 2 installers	
Food Safe Sealant	60 meter
HygiSeal	45 meter

## IP30RB(na)



### IMPACT CLASS 4 (not anchored)

against electric pallet trucks up to max. 1500 Kg total weight

### IMPACT CLASS 5 (anchored)

against engine driven pallet trucks and vorklifts up to max. 4000 Kg total weight and max. speed of 5 Km/h when anchored

#### Technical info

	Kerb	Corner internal / external	End piece right / left
Length	1.500 mm	2 x 500 mm	500 mm
Height	300 mm	300 mm	300 mm
Thickness	100 mm	100 mm	100 mm
Weight	84 kg	56 kg	28 kg
Amount / pallet	18 m	12 pc	12 R & 12 L
Pallet size	155 x 65 x 70cmH	120 x 80 x 70cmH	120 x 80 x 70cmH
Pallet weight	+/- 1.050 kg	+/- 700 kg	+/- 700 kg
Temperature resistance	-35°C - +85°C (long exposure)		

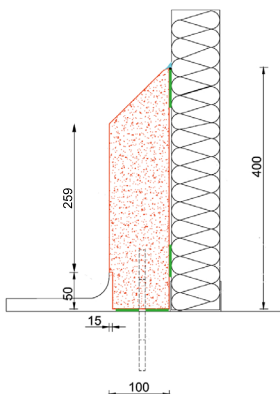
#### Average consumption of (per meter)

Food Safe sealant or HygiSeal White or RAL9002	200 cc
Hard Fix Glue	600 cc
Chemfix	150 cc

Installation m/day (8h) with 2 installers	
Food Safe Sealant	40 meter
HygiSeal	35 meter

Optional chemical anchorage of Ø10 - 150 mm or 200 mm with Polysto 2-component Chemfix.

## IP40RB(na)



### IMPACT CLASS 4 (not anchored)

against electric pallet trucks up to max. 1500 Kg total weight

### IMPACT CLASS 5 (anchored)

against engine driven pallet trucks and vorklifts up to max. 4000 Kg total weight and max. speed of 5 Km/h when anchored

#### Technical info

	Kerb	Corner internal / external	End piece right / left
Length	1.500 mm	2 x 500 mm	500 mm
Height	400 mm	400 mm	400 mm
Thickness	100 mm	100 mm	100 mm
Weight	123 kg	82 kg	41 kg
Amount / pallet	18 m	12 pc	12 R & 12 L
Pallet size	155 x 85 x 70cmH	120 x 80 x 70cmH	120 x 80 x 70cmH
Pallet weight	+/- 1.500 kg	+/- 1.000 kg	+/- 1.000 kg
Temperature resistance	-35°C - +85°C (long exposure)		

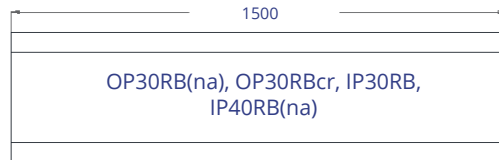
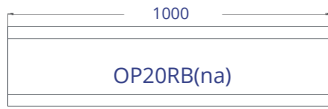
#### Average consumption of (per meter)

Food Safe sealant or HygiSeal White or RAL9002	205 cc
Hard Fix Glue	650 cc
Chemfix	150 cc

Installation m/day (8h) with 2 installers	
Food Safe Sealant	40 meter
HygiSeal	35 meter

Optional chemical anchorage of Ø10 - 150 mm or 200 mm with PolySto 2-component Chemfix.

Kerb

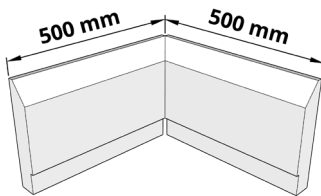


OP20RB(na), OP30RB(na), IP30RB(na), IP40RB(na)

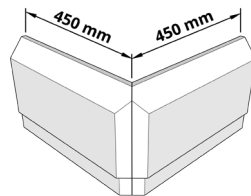
Internal corner

External corner

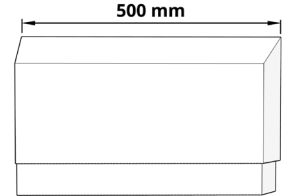
End piece



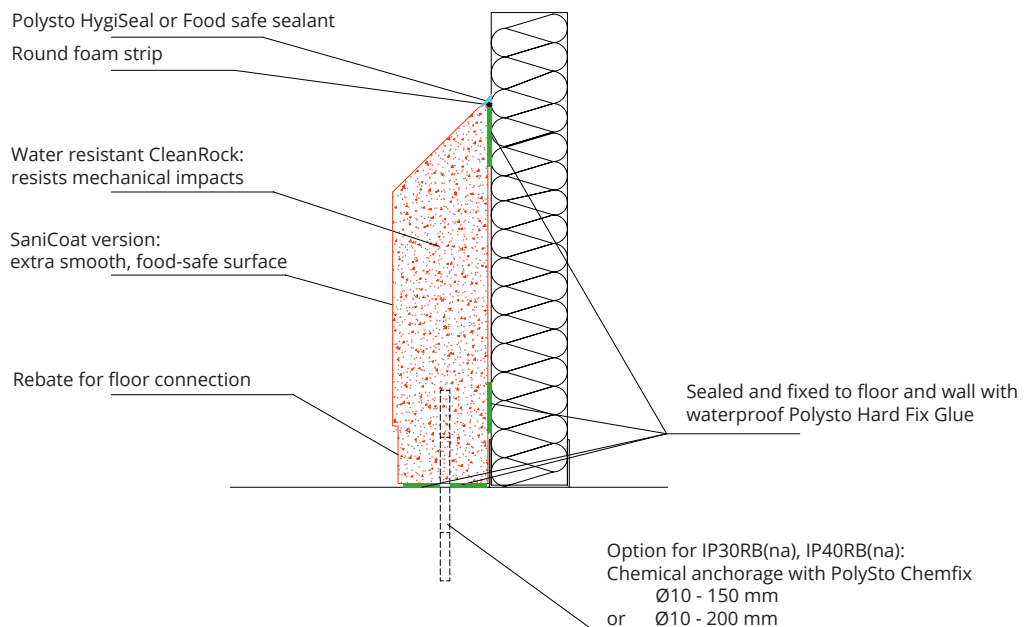
OP30RBcr-IN = 2 x 1500 mm



OP30RBcr-EX = 2 x 1450 mm



OP30RBcr-END = 1500 mm



OP20RB SaniCoat



OP30RB SaniCoat



OP30RBcr SaniCoat



OP20RB Natural



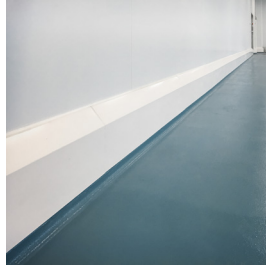
OP30RB Natural



IP30RB SaniCoat



IP40RB SaniCoat



IP30RB Natural



IP40RB Natural

